

# LM2901, LM339/LM339A, LM3302, LM239/LM239A

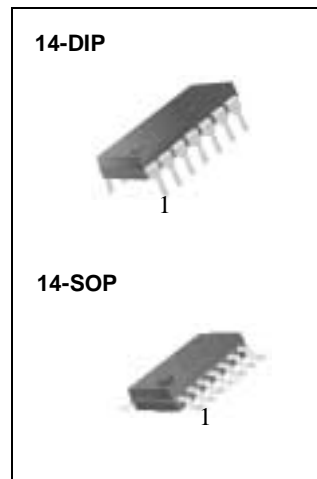
## Quad Comparator

### Features

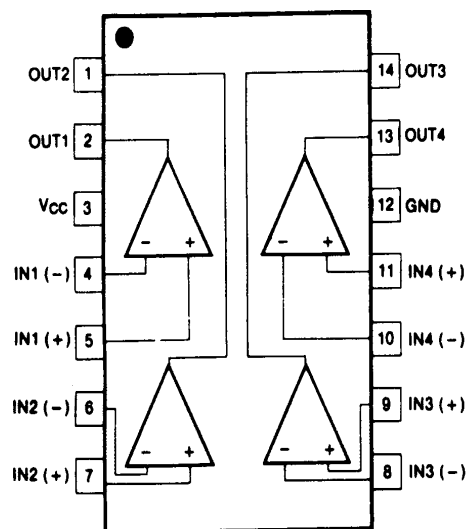
- Single or dual supply operation
- Wide range of supply voltage  
LM2901, LM339/LM339A, LM239/LM239A : 2 ~ 36V  
(or  $\pm 1 \sim \pm 18V$ )  
LM3302 : 2 ~ 28V (or  $\pm 1 \sim \pm 14V$ )
- Low supply current drain 800 $\mu A$  Typ.
- Open collector outputs for wired and connectors
- Low input bias current 25nA Typ.
- Low Input offset current  $\pm 2.3nA$  Typ.
- Low input offset voltage  $\pm 1.4mV$  Typ.
- Common mode input voltage range includes ground.
- Low output saturation voltage
- Output compatible with TTL, DTL and MOS logic system

### Description

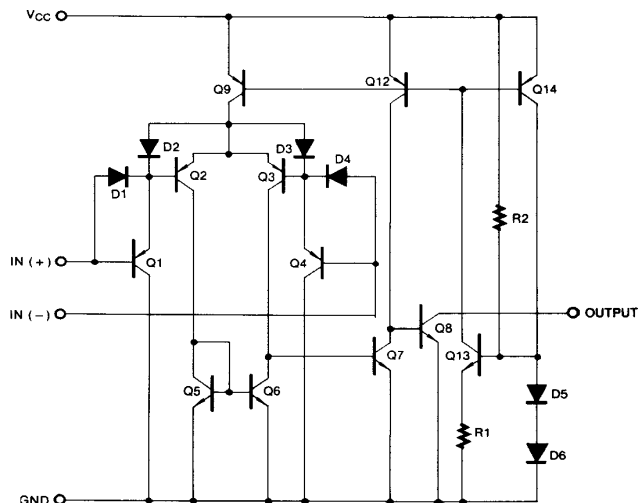
The LM2901, LM339/LM339A, LM239/LM239A, LM3302 consist of four independent voltage comparators designed to operate from single power supply over a wide voltage range.



### Internal Block Diagram



## Schematic Diagram



## Absolute Maximum Ratings

Parameter	Symbol	Value	Unit
Supply Voltage	V <sub>CC</sub>	±18 or 36	V
Supply Voltage only LM3302	V <sub>CC</sub>	±14 or 28	V
Differential Input Voltage	V <sub>I(DIFF)</sub>	36	V
Differential Input Voltage only LM3302	V <sub>I(DIFF)</sub>	28	V
Input Voltage	V <sub>I</sub>	- 0.3 to +36	V
Input Voltage only LM3302	V <sub>I</sub>	- 0.3 to +28	V
Output Short Circuit to GND	-	Continuous	-
Power Dissipation	PD	570	mW
Operating Temperature LM339/LM339A LM2901/LM3302 LM239/LM239A	TOPR	0 ~ + 70 -40 ~ + 85 -25 ~ + 85	°C
Storage Temperature	T <sub>STG</sub>	- 65 ~ + 150	°C

## Electrical Characteristics

(VCC = 5V, TA = 25°C, unless otherwise specified)

Parameter	Symbol	Conditions	LM239A/LM339A			LM239/LM339			Unit	
			Min	Typ	Max	Min	Typ	Max		
Input Offset Voltage	V <sub>IO</sub>	V <sub>O(P)</sub> = 1.4V, R <sub>S</sub> = 0Ω	-	±1	±2	-	±1.4	±5	mV	
		Note 1	-		±4.0	-	-	±9.0		
Input Offset Current	I <sub>IO</sub>		-	±2.3	±50	-	±2.3	±50	nA	
		Note 1	-		±150	-	-	±150		
Input Bias Current	I <sub>BIAS</sub>		-	57	250	-	57	250	nA	
		Note 1	-	-	400	-	-	400		
Input Common Mode Voltage Range	V <sub>I(R)</sub>		0	-	V <sub>CC</sub> -1.5	0	-	V <sub>CC</sub> -1.5	V	
		Note 1	0	-	V <sub>CC</sub> -2	0	-	V <sub>CC</sub> -2		
Supply Current	I <sub>CC</sub>	V <sub>CC</sub> = 5V R <sub>L</sub> = ∞	-	1.1	2.0	-	1.1	2.0	mA	
Voltage Gain	G <sub>V</sub>	V <sub>CC</sub> = 15V, R <sub>L</sub> ≥ 15KΩ (for large swing)	50	200	-	50	200	-	V/mV	
Large Signal Response Time	T <sub>LRES</sub>	V <sub>I</sub> = TTL Logic Swing V <sub>REF</sub> = 1.4V, V <sub>RL</sub> = 5V, R <sub>L</sub> = 5.1KΩ	-	350	-	-	350	-	ns	
Response Time	T <sub>RES</sub>	V <sub>RL</sub> = 5V, R <sub>L</sub> = 5.1KΩ	-	1.4	-	-	1.4	-	μs	
Output Sink Current	I <sub>SINK</sub>	V <sub>I(-)</sub> ≥ 1V, V <sub>I(+)</sub> = 0V, V <sub>O(P)</sub> ≤ 1.5V	6	18	-	6	18	-	mA	
Output Saturation Voltage	V <sub>SAT</sub>	V <sub>I(-)</sub> ≥ 1V, V <sub>I(+)</sub> = 0V	-	140	400	-	140	400	mV	
		I <sub>SINK</sub> = 4mA	Note 1	-		700	-			700
Output Leakage Current	I <sub>o(LKG)</sub>	V <sub>I(-)</sub> = 0V V <sub>I(+)</sub> = 1V	V <sub>O(P)</sub> = 5V	-	0.1	-	-	0.1	-	nA
			V <sub>O(P)</sub> = 30V	-	-	1.0	-	-	1.0	μA
Differential Voltage	V <sub>I(DIFF)</sub>	Note 1	-	-	36	-	-	36	V	

### Note 1.

LM339/LM339A : 0 ≤ T<sub>A</sub> ≤ +70°C

LM2901/LM3302 : -40 ≤ T<sub>A</sub> ≤ +85°C

LM239/LM239A : -25 ≤ T<sub>A</sub> ≤ +85°C

## Electrical Characteristics (Continued)

( $V_{CC} = 5V$ ,  $T_A = 25^\circ C$ , unless otherwise specified)

Parameter	Symbol	Conditions	LM2901			LM3302			Unit
			Min	Typ	Max.	Min	Typ	Max.	
Input Offset Voltage	$V_{IO}$	$V_{O(P)} = 1.4V$ , $R_S = 0\Omega$	-	2	7	-	2	20	mV
		Note 1	-	9	15	-	-	40	
Input Offset Current	$I_{IO}$		-	2.3	50	-	3	100	nA
		Note 1	-	50	200	-	-	300	
Input Bias Current	$I_{BIAS}$		-	57	250	-	57	250	nA
		Note 1	-	200	500	-	-	1000	
Input Common Mode Voltage Range	$V_{I(R)}$		0	-	$V_{CC} - 1.5$	0	-	$V_{CC} - 1.5$	V
		Note 1	0	-	$V_{CC} - 2$	0	-	$V_{CC} - 2$	
Supply Current	$I_{CC}$	$R_L = \infty$ , $V_{CC} = 5V$	-	1.1	2.0	-	1.1	2.0	mA
		$R_L = \infty$ , $V_{CC} = 30V$	-	1.6	2.5	-	-	-	
Voltage Gain	$G_V$	$V_{CC} = 15V$ , $R_L \geq 15K\Omega$ (for large swing)	25	100	-	2	30	-	V/ mV
Large Signal Response Time	$T_{LRES}$	$V_I = \text{TTL Logic Swing}$ $V_{REF} = 1.4V$ , $V_{RL} = 5V$ , $R_L = 5.1K\Omega$	-	350	-	-	350	-	ns
Response Time	$T_{RES}$	$V_{RL} = 5V$ , $R_L = 5.1K\Omega$	-	1.4	-	-	1.4	-	$\mu s$
Output Sink Current	$I_{SINK}$	$V_{I(-)} \geq 1V$ , $V_{I(+)} = 0V$ , $V_{O(P)} \leq 1.5V$	6	18	-	6	18	-	mA
Output Saturation Voltage	$V_{SAT}$	$V_{I(-)} \geq 1V$ , $V_{I(+)} = 0V$ $I_{SINK} = 4mA$	-	140	400	-	140	400	mV
		Note 1	-	-	700	-	-	700	
Output Leakage Current	$I_{O(LKG)}$	$V_{I(-)} = 0V$	-	0.1	-	-	0.1	-	nA
		$V_{I(+)} = 1V$	-	-	1.0	-	-	1.0	$\mu A$
Differential Voltage	$V_{I(DIFF)}$	Note 1	-	-	36	-	-	36	V

### Note 1.

LM339/LM339A :  $0 \leq T_A \leq +70^\circ C$

LM2901/LM3302 :  $-40 \leq T_A \leq +85^\circ C$

LM239/LM239A :  $-25 \leq T_A \leq +85^\circ C$

# Typical Performance Characteristics

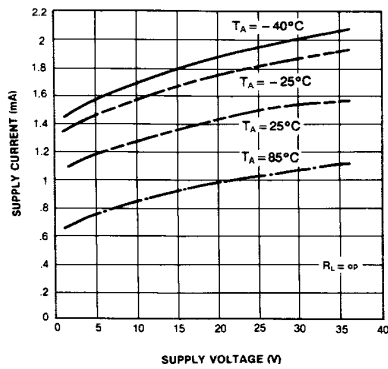


Figure 1. Supply Current vs Supply Voltage

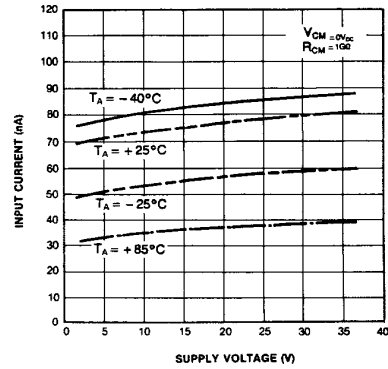


Figure 2. Input Current vs Supply Voltage

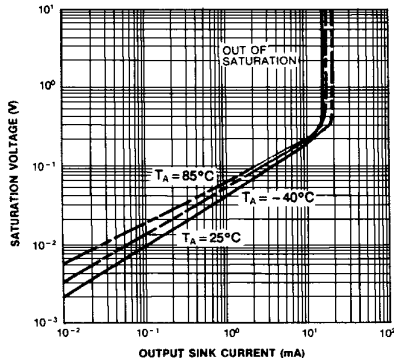


Figure 3. Output Saturation Voltage vs sink Current

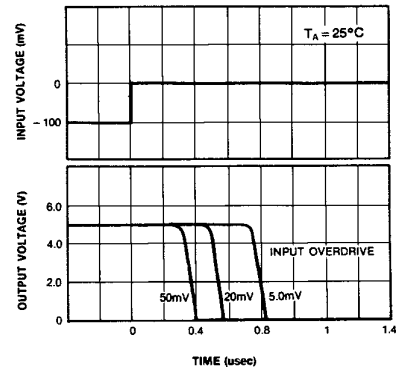


Figure 4. Response Time for Various Input Overdrive-Negative Transition

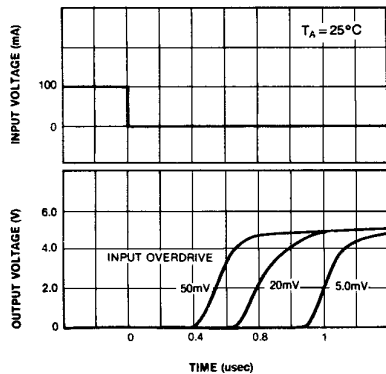
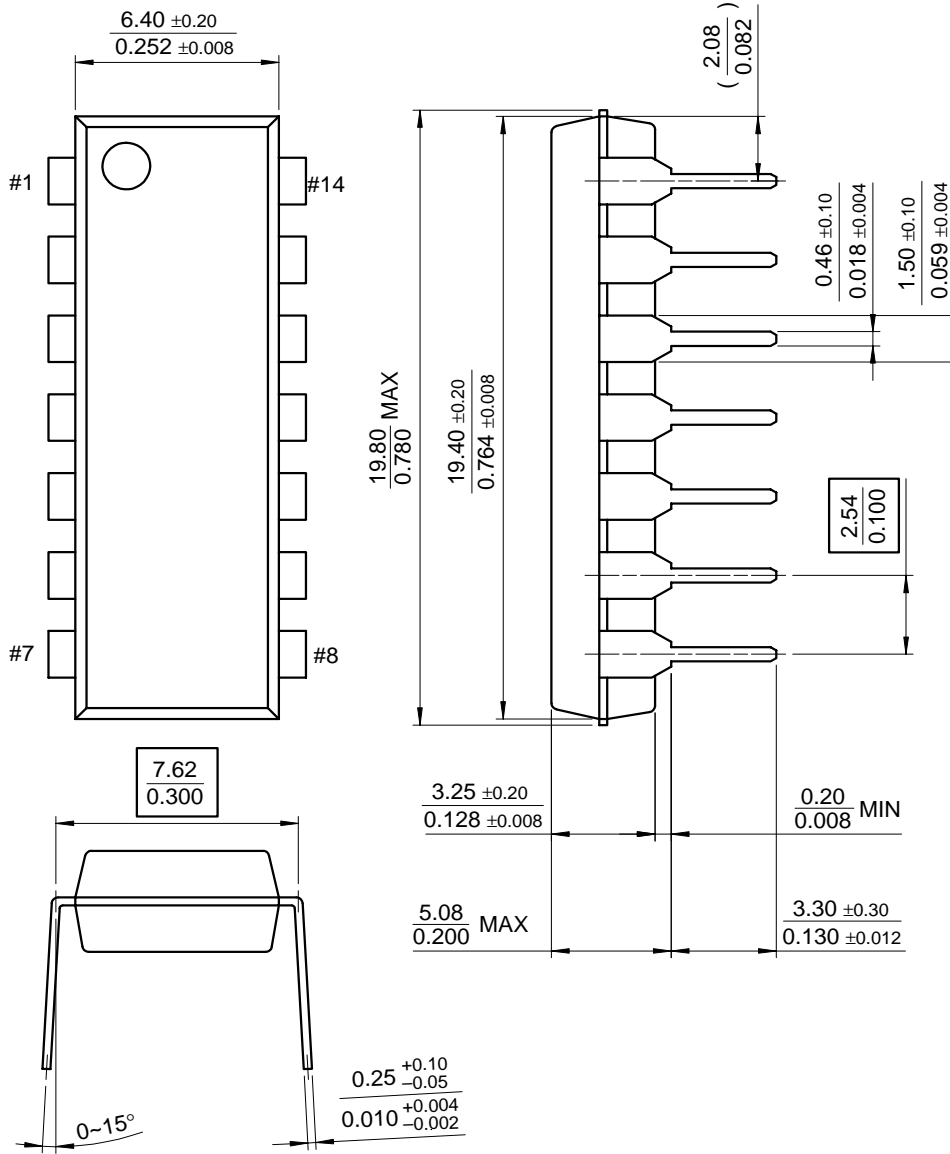


Figure 5. Response Time for Various Input Overdrive-Positive Transition

# Mechanical Dimensions

## Package

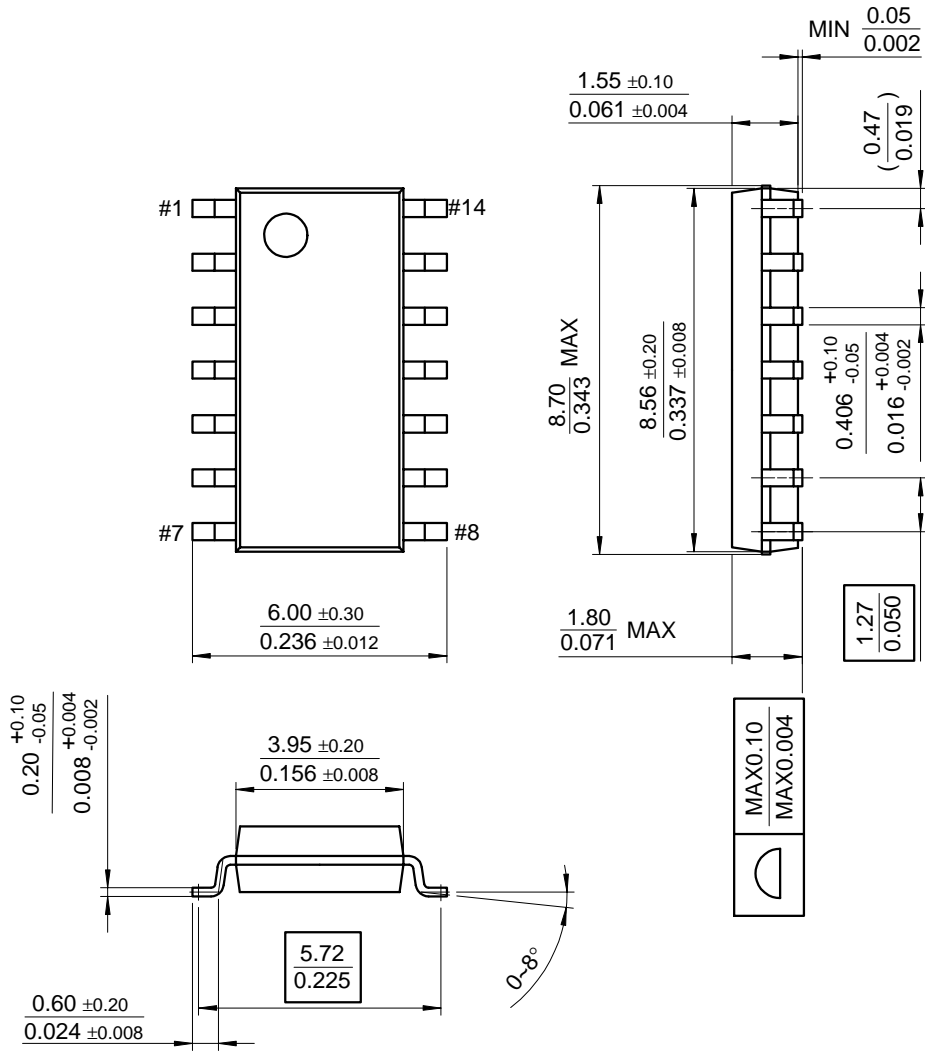
### 14-DIP



# Mechanica Dimensions (Continued)

## Package

### 14-SOP



## Ordering Information

Product Number	Package	Operating Temperature	
LM339N	14-DIP	0 ~ + 70°C	
LM339AN			
LM339M	14-SOP		
LM339AM			
LM2901N	14-DIP		-40 ~ + 85°C
LM2901M	14-SOP		
LM3302N	14-DIP		
LM3302M	14-SOP		
LM239N	14-DIP	-25 ~ + 85°C	
LM239AN			
LM239M	14-SOP		
LM239AM			





**DISCLAIMER**

FAIRCHILD SEMICONDUCTOR RESERVES THE RIGHT TO MAKE CHANGES WITHOUT FURTHER NOTICE TO ANY PRODUCTS HEREIN TO IMPROVE RELIABILITY, FUNCTION OR DESIGN. FAIRCHILD DOES NOT ASSUME ANY LIABILITY ARISING OUT OF THE APPLICATION OR USE OF ANY PRODUCT OR CIRCUIT DESCRIBED HEREIN; NEITHER DOES IT CONVEY ANY LICENSE UNDER ITS PATENT RIGHTS, NOR THE RIGHTS OF OTHERS.

**LIFE SUPPORT POLICY**

FAIRCHILD'S PRODUCTS ARE NOT AUTHORIZED FOR USE AS CRITICAL COMPONENTS IN LIFE SUPPORT DEVICES OR SYSTEMS WITHOUT THE EXPRESS WRITTEN APPROVAL OF THE PRESIDENT OF FAIRCHILD SEMICONDUCTOR CORPORATION. As used herein:

1. Life support devices or systems are devices or systems which, (a) are intended for surgical implant into the body, or (b) support or sustain life, and (c) whose failure to perform when properly used in accordance with instructions for use provided in the labeling, can be reasonably expected to result in a significant injury of the user.
2. A critical component in any component of a life support device or system whose failure to perform can be reasonably expected to cause the failure of the life support device or system, or to affect its safety or effectiveness.