

product description:

RM9001A adopts an adaptive LED four-segment segment drive mechanism, which can flexibly set each segment of the LED string to adapt to the market in different regions. voltage, thereby improving LED utilization and total output lumens.

RM9001A has an adjustable over-temperature control function, which can set different over-temperature adjustment points according to different applications. At the same time, the chip has Power compensation function, the output power is basically unchanged when the output voltage fluctuates within the range.

System Specifications: 10W/45mA

Input voltage	220Vac
Input Current	45mA
The output voltage	270
Constant current accuracy	$<\pm 3\%$
efficiency	$>80\%$
P F	>0.9
Topology	High voltage linear

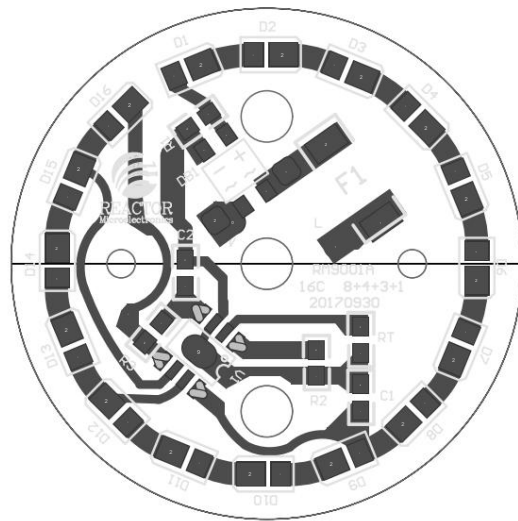
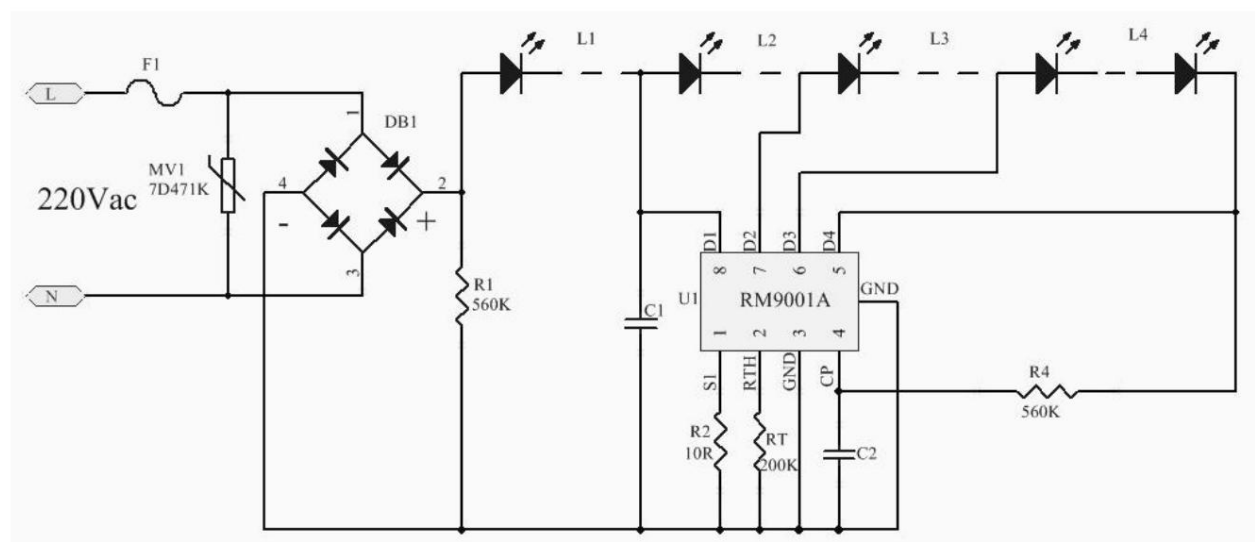
PCB:**typical application:**

Figure 1 Schematic diagram of system application

System BOM list:

Tag number	Component Type	Specification Description	Package Size	Quantity	Manufacturer
FR1	wire wound fuse resistor	68R, 1W	DIP	1	
MV1	Varistor	7D471K	DIP	1	
DB1	Rectifier bridge	MB6F,600V,0.5A	SOP-4	1	
C1	SMD capacitor 10nF, 500V, ±5%		SMD1206	1	
R2	Chip Resistor 10R, 1/4W, ±1%		SMD1206	1	
R4	Chip resistance 560k Ω , 1/4W, ±5%		SMD1206	1	
RT	Chip resistance 200k Ω , 1/4W, ±5%		SMD1206	1	
U1	IC	RM9001A	ESOP-8	1	Asia Microelectronics
LED1-LED15	Lamp beads 18V, 60mA, 15 strings 1 parallel	SMD2835		15	
Light source integration	45mmx45mm aluminum substrate		1.2mm thick 1		